



Clone Cultivar Catalog

2026 Season

14 Premium Cultivars
Strain Profiles • Grow Data • Clone Care Guide

[Native Flower Cannabis Dispensary](#)

Contents

Clone Care Guide

Mandarin Fast Version (Sativa)

Toxic Delusion (Sativa)

Xertz (Sativa)

Noxious Nutz (Hybrid)

Angel of Darkness (Hybrid)

Donny Burger (Hybrid)

Painkiller XL (CBD)

Charlotte's Web (CBD)

Purple Kush (Indica)

Godfather OG (Indica)

Big Jack (Indica)

MAC 1 (Indica)

Northern Lights Skunk (Indica)

Hindu Kush (Indica)

Clone Care Guide

Everything you need to know to successfully transplant and grow your Native Flower clones.

Receiving Your Clones

When you receive your clones, inspect them immediately. Healthy clones should have green, turgid leaves and visible white root tips emerging from the growing medium. Some minor yellowing or wilting from transport stress is normal. If clones appear severely wilted, place them in a humid environment (humidity dome or clear plastic bag with holes) under low-intensity light for 24–48 hours before transplanting.

Transplanting

Transplant your clones into their final containers within 1–3 days of receiving them. Use a well-draining growing medium — a quality potting mix with 20–30% perlite works well for most cultivars. Pre-moisten the soil before planting. Dig a hole slightly larger than the clone's root ball, gently place the clone, and lightly firm the soil around the stem. Water in gently with plain, pH-adjusted water (6.0–6.5 for soil, 5.5–6.0 for coco/hydro). Do not add nutrients for the first 3–5 days.

Environment — First Two Weeks

Clones need a gentle transition period. Keep temperatures between 72–78°F (22–26°C) with humidity at 65–75%. Use low-to-moderate light intensity — T5 fluorescents, LEDs at reduced power, or indirect sunlight for the first week. Gradually increase light intensity over 7–10 days as the clone establishes roots and shows new growth. A light cycle of 18 hours on / 6 hours off is standard for the vegetative phase.

Watering & Feeding

Overwatering is the most common mistake with fresh clones. Water only when the top inch of soil feels dry. Young clones have small root systems and cannot handle heavy watering. After the first week, begin feeding with a dilute vegetative nutrient solution (25–50% of the manufacturer's recommended strength), gradually increasing to full strength over the next 1–2 weeks as the plant establishes. Always pH-adjust your nutrient solution.

Vegetative Growth

Once your clones are established and showing vigorous new growth (typically 1–2 weeks after transplant), they are in full vegetative mode. This is the time to begin training techniques such as topping, LST (low-stress training), or SCROG setup depending on the cultivar (see individual strain pages for recommendations). Maintain 18/6 light cycle, temperatures of 70–80°F, and humidity around 50–65%. Feed with a full-strength vegetative nutrient program.

Transitioning to Flower

When your plants have reached the desired size (remember, most strains will stretch 50–100% in early flower), switch to a 12/12 light cycle to initiate flowering. Transition to a bloom-specific nutrient program higher in phosphorus and potassium. Gradually reduce humidity to 40–50% during flower, dropping to 35–45% in the final two weeks. Monitor trichome development with a jeweler's loupe or digital microscope to determine optimal harvest timing — milky white trichomes with 10–20% amber is a common target.

Pest & Disease Prevention

Prevention is far easier than treatment. Keep your grow area clean, maintain proper airflow, and inspect plants regularly. Common issues include spider mites (check undersides of leaves), powdery mildew (maintain airflow and humidity control), and fungus gnats (avoid overwatering). Integrated pest management (IPM) using beneficial insects, neem oil, or other organic controls is recommended. Address any issues immediately — problems escalate quickly in a grow environment.

Harvest, Dry & Cure

Harvest when trichomes reach your target maturity. Trim excess fan leaves (wet or dry trim based on your preference and humidity conditions). Hang branches or place buds on drying racks in a dark room at 60–65°F with 55–62% humidity. Drying should take 7–14 days — buds are ready for curing when small stems snap rather than bend. Cure in airtight glass jars, opening (“burping”) daily for the first two weeks, then every few days for at least 2–4 more weeks. A proper cure develops flavor, smoothness, and potency.

Mandarin Fast Version

Sativa-dominant Hybrid (Fast Version)



Lineage	Mandarin Sunset lineage (Fast Version feminized) — Quebec Cannabis Seeds
Indica / Sativa	70% Sativa / 30% Indica
THC	Up to 26%
CBD	<1%
Flowering Time	8–10 weeks (60–70 days); outdoor harvest in September
Yield (Indoor)	Up to 650 g/m ²
Yield (Outdoor)	Up to 18 oz (~510 g) per plant
Terpene Profile	Limonene, Myrcene, Terpinolene
Aroma / Flavor	Bright citrus (orange, lemon), sweet tropical fruit, zesty herbal finish
Difficulty	Moderate
Grow Method	Topping, LST — promotes even canopy and light penetration
Effects	Uplifting cerebral onset with mental clarity and creativity; gentle body buzz as high progresses

Grower's Notes

Mandarin Fast Version from Quebec Cannabis Seeds is a sativa-dominant fast-flowering hybrid bred for quick harvests without sacrificing potency or flavor. With a 70/30 sativa-to-indica ratio and THC up to 26%, it delivers an energizing, clear-headed high that transitions into a gentle body relaxation — ideal for daytime use, creative work, and social activities.

The “Fast Version” designation means this strain incorporates genetics that accelerate flowering time compared to the standard photoperiod version, finishing in 60–70 days indoors with outdoor harvest in September — a significant advantage for Ontario growers racing against fall weather. Plants grow to medium-tall height with resilient genetics that resist common pests and mold. Indoor yields reach up to 650 g/m², and outdoor plants can produce up to 18 ounces each. The terpene profile is led by limonene (bright citrus), myrcene (earthy sweetness), and terpinolene (floral, herbal), creating a refreshing citrus aroma with tropical sweetness.

Toxic Delusion

Sativa-dominant Hybrid



Lineage	Big Detroit Energy (Ethos) x Crescendo RBX1 (Ethos) — Aequo Genetics
Indica / Sativa	65% Sativa / 35% Indica
THC	27–30%
CBD	~2%
Flowering Time	9–11.5 weeks (65–80 days)
Yield (Indoor)	Large (SOG recommended)
Yield (Outdoor)	Not specified
Terpene Profile	Limonene, Myrcene, β -Caryophyllene (inferred from parentage)
Aroma / Flavor	Bubble gum, orange zest, gassy funk
Difficulty	Intermediate to Advanced
Grow Method	SOG recommended; aggressive topping to manage stretch
Effects	Potent cerebral onset with creative energy; settles into relaxed euphoria

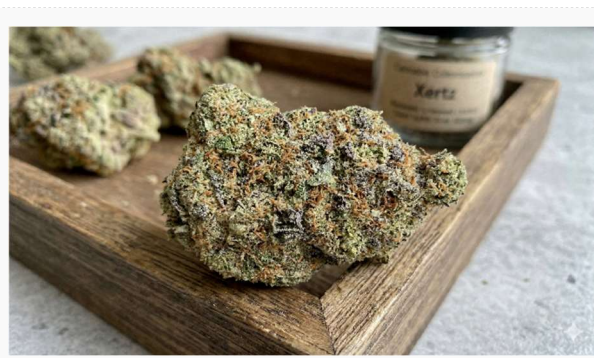
Grower's Notes

Toxic Delusion from Aequo Genetics is a high-potency sativa-dominant hybrid with a complex lineage. Big Detroit Energy descends from Mandarin Sunset and Lilac Diesel lines, while Crescendo RBX1 brings NYCD, Cherry Pie, Citral Glue, and Chem D i95 into the mix. The result is a THC powerhouse testing 27–30% with an unusual ~2% CBD that adds a touch of cannabinoid balance.

The plants grow tall and stretch aggressively during the transition to flower. The breeder recommends Sea of Green (SOG) to manage height and maximize canopy efficiency. Plan for significant vertical space or implement aggressive topping and supercropping early in veg. The wide flowering window (65–80 days) reflects phenotypic variation — watch trichome development rather than relying on a calendar. This is a newer boutique strain with limited public grow journal data.

Xertz

Indica-dominant Hybrid



Lineage	Garlic Triangle Mintz x GasOcane — Aequae Genetics
Indica / Sativa	Indica-dominant
THC	26–31%
CBD	0.05–2%
Flowering Time	~9–10 weeks (estimated)
Yield (Indoor)	Large
Yield (Outdoor)	Large
Terpene Profile	β-Caryophyllene, Myrcene, Limonene (inferred)
Aroma / Flavor	Nutty, dank, earthy with garlic and gas undertones
Difficulty	Moderate
Grow Method	Standard indoor; defoliation recommended for dense canopy
Effects	Heavy body stone; deep physical relaxation with sedative finish

Grower's Notes

Xertz from Aequae Genetics is an indica-dominant hybrid that stacks savory, gas-forward flavors. The Garlic Triangle Mintz parent brings GMO-lineage garlic funk and minty cookie dough terps, while GasOcane (Stay Puft x Pure Michigan crossed with Sugarcane) contributes tropical fruit and fuel notes. THC tests at a formidable 26–31%.

The indica dominance should produce a stocky, manageable plant with very dense nugs. That density demands careful humidity management in late flower — keep RH below 50% and ensure airflow throughout the canopy. A proper dry and extended cure (14+ days) will bring out the complex savory terpene profile. Very limited public grow data exists; breeder descriptions are the primary source.

Noxious Nutz

Sativa-dominant Hybrid



Lineage	(King Tut x Peanut Butter Breath) x GasOcane — Aequ Genetics
Indica / Sativa	60% Sativa / 40% Indica
THC	24–28%
CBD	0.05–2%
Flowering Time	~9 weeks (65 days)
Yield (Indoor)	Average
Yield (Outdoor)	Average
Terpene Profile	β-Caryophyllene, Myrcene, Limonene (inferred)
Aroma / Flavor	Gassy, dank, nutty — peanut butter with fuel undertones
Difficulty	Moderate
Grow Method	Indoor/outdoor/greenhouse; minimal defoliation needed (low leaf count)
Effects	Uplifting cerebral energy with creative focus; moderate body relaxation

Grower's Notes

Noxious Nutz (listed as “Noxious Nuts” by the breeder) from Aequ Genetics combines King Tut’s landrace sativa energy with Peanut Butter Breath’s nutty, earthy funk (Do-Si-Dos x Mendo Breath), all layered over GasOcane’s tropical gas character. The result is a unique savory-forward strain with genuine complexity.

A standout grow characteristic is this strain’s cold tolerance — it takes cool temperatures well and develops dramatic dark purple to near-black coloring when exposed to cooler nights. The low leaf count is a practical advantage: better light penetration during growth and easier trimming at harvest. The 9-week flowering time is efficient for a sativa-leaning plant, making it a reasonable choice for late-season outdoor grows in Ontario.

Angel of Darkness

Balanced Hybrid



Lineage	Stay Puft #4 x GasOcane — Aequ Genetics
Indica / Sativa	50% Indica / 50% Sativa
THC	26–30%
CBD	0.05–2%
Flowering Time	~9 weeks (65 days)
Yield (Indoor)	Large
Yield (Outdoor)	Large
Terpene Profile	Limonene, β -Caryophyllene, Linalool (inferred)
Aroma / Flavor	Sweet gas, propane, hint of berries
Difficulty	Easy to Moderate
Grow Method	Versatile — indoor, outdoor, greenhouse; responds to SCROG
Effects	Balanced cerebral uplift and body relaxation; euphoric with calming finish

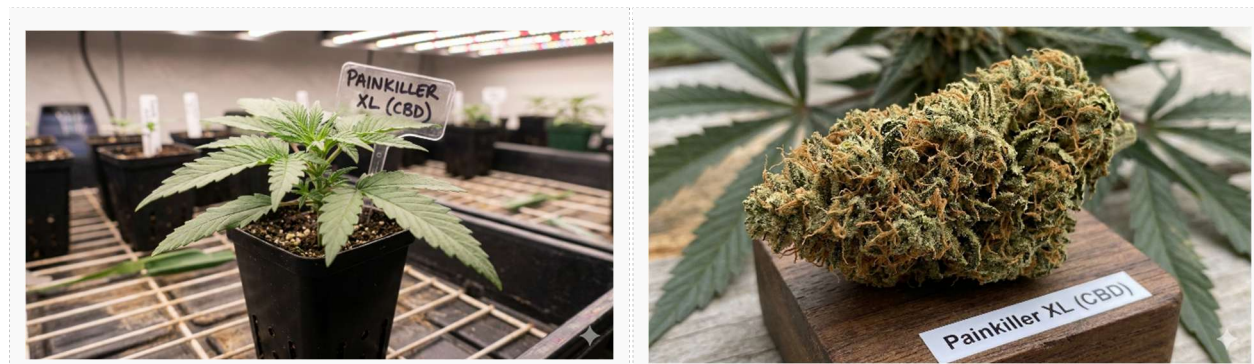
Grower's Notes

Angels of Darkness from Aequ Genetics crosses Stay Puft #4 (Marshmallow OG x ICC from Clearwater Genetics) with Aequ's in-house GasOcane. Stay Puft contributes creamy, sweet profiles and heavy resin production, while GasOcane adds tropical fruit and fuel character. The 50/50 hybrid structure delivers a genuinely balanced experience.

The breeder describes this as a stunning, very easy grow of top-grade smoke — potentially one of the more beginner-friendly options in the Aequ lineup. The balanced genetics should produce a medium-height plant with reasonable stretch and strong bud production. Both parent lines are known resin factories, so expect heavy trichome coverage. The 9-week flowering time and large yield designation make this an efficient producer.

Painkiller XL

CBD Sativa Hybrid



Lineage	Juanita la Lagrimosa x Royal Highness — Royal Queen Seeds
Indica / Sativa	Sativa-dominant (~1:1 THC:CBD)
THC	~9%
CBD	~9%
Flowering Time	~8 weeks
Yield (Indoor)	450–500 g/m ²
Yield (Outdoor)	500–600 g/plant
Terpene Profile	Myrcene, Pinene, Caryophyllene
Aroma / Flavor	Herbal, earthy, sweet fruit undertones
Difficulty	Moderate
Grow Method	Standard indoor/outdoor; maintain optimal nutrition for CBD production
Effects	Gentle, clear-headed relief; anti-inflammatory; relaxing without heavy sedation

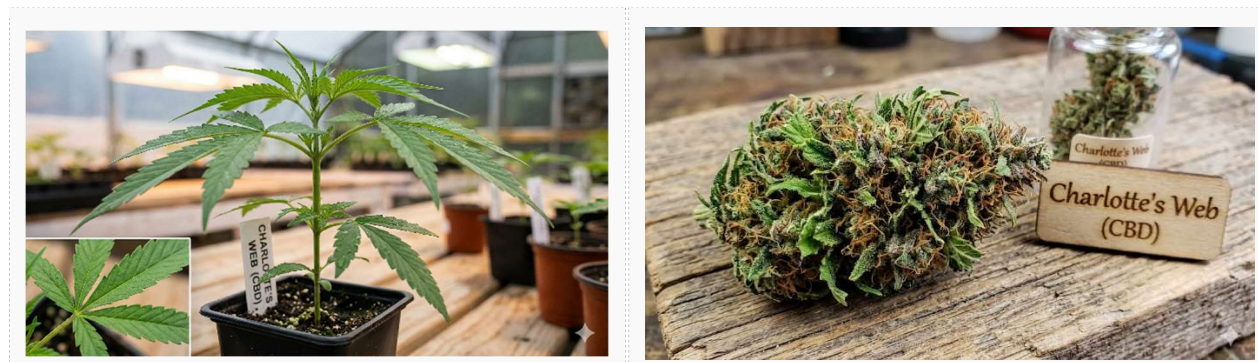
Grower's Notes

Painkiller XL is a CBD-rich medicinal strain from Royal Queen Seeds, engineered for a balanced ~1:1 THC-to-CBD ratio. The Juanita la Lagrimosa parent is one of the most respected CBD donors in breeding, and Royal Highness adds structure and resin. With approximately 9% of each major cannabinoid, this strain delivers therapeutic benefit without an overwhelming psychoactive experience.

The plant grows to medium height with a sativa-leaning structure and some stretch during flower transition. Indoor yields are moderate at 450–500 g/m². CBD cultivars can be slightly less vigorous than high-THC strains, so maintaining optimal nutrition and environment is important for maximizing cannabinoid production. Flowering completes in approximately 8 weeks. This is an excellent choice for patients and medical-market growers.

Charlotte's Web

CBD Hemp



Lineage	Proprietary (industrial hemp x high-CBD cultivar) — Stanley Brothers / CW Holdings
Indica / Sativa	Hemp-type (<0.3% THC, high CBD)
THC	<0.3%
CBD	15–20%
Flowering Time	9–10 weeks
Yield (Indoor)	Moderate
Yield (Outdoor)	Moderate
Terpene Profile	Myrcene, Pinene, Bisabolol
Aroma / Flavor	Mild herbal, earthy, subtle pine
Difficulty	Moderate
Grow Method	Outdoor preferred; warm, well-drained conditions with good light
Effects	Non-intoxicating; calming, anti-seizure, anti-inflammatory, anxiolytic

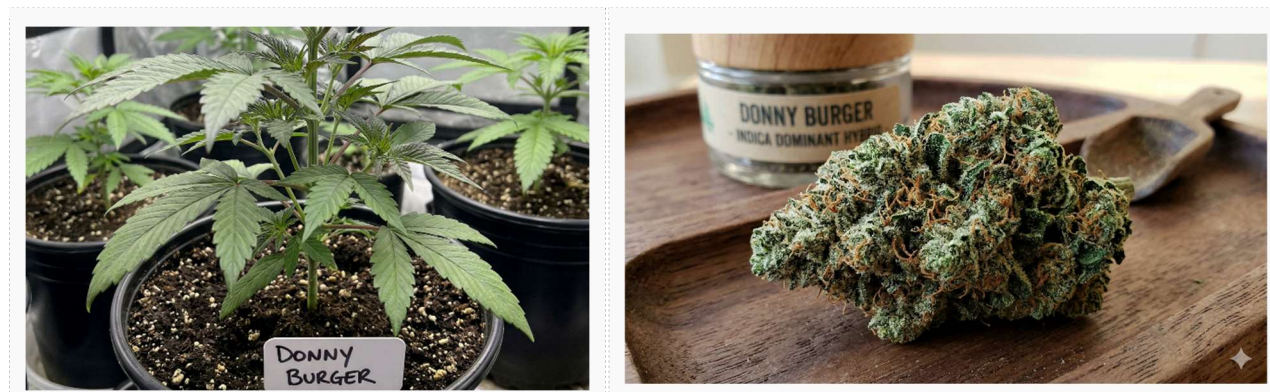
Grower's Notes

Charlotte's Web is the most famous CBD strain in the world, developed by the Stanley Brothers in Colorado. Named after Charlotte Figi, whose severe epilepsy (Dravet syndrome) was dramatically improved by the extract, this cultivar produces very high CBD (15–20%) with negligible THC (below 0.3%). It is classified as hemp in most jurisdictions.

Growing Charlotte's Web is different from typical cannabis cultivation. The plants grow tall (5+ feet) with an open, branchy structure and airy flower clusters that lack the dense bud structure of THC cultivars. Flowering takes 9–10 weeks with outdoor harvest typically in October. The airy structure makes it susceptible to mold, so good airflow is essential. This is a purpose-driven cultivar — grown for CBD extraction or for patients needing high-CBD, negligible-THC medicine.

Donny Burger

Indica-dominant Hybrid



Lineage	GMO (Garlic Cookies) x Han Solo Burger — Skunktek
Indica / Sativa	70% Indica / 30% Sativa
THC	25–30%+
CBD	<1%
Flowering Time	8–9 weeks
Yield (Indoor)	Moderate to Good
Yield (Outdoor)	Moderate to Good
Terpene Profile	β-Caryophyllene, Limonene, Myrcene
Aroma / Flavor	Garlic, cheese, diesel, earthy funk
Difficulty	Intermediate
Grow Method	Heavy defoliation; low humidity (<45% RH in late flower); carbon filtration essential
Effects	Heavy-hitting body high; deep relaxation, couch-lock, appetite stimulation

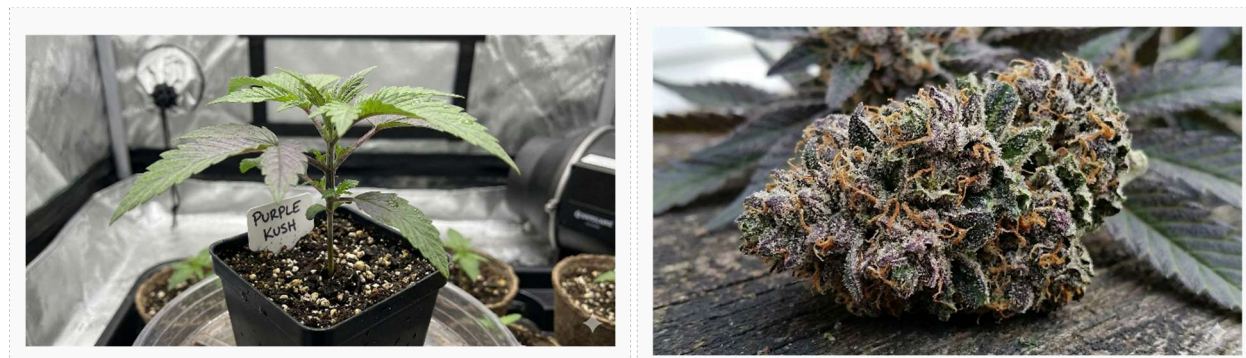
Grower's Notes

Donny Burger is a pungent, heavy-hitting indica from Skunktek, combining GMO's legendary garlic-forward funk with Han Solo Burger's OG-lineage structure. THC regularly tests 25–30%+, and the savory terpene profile is among the most intense in modern cannabis. Expect garlic, cheese, and diesel in spades.

The plants stay short to medium with a dense, bushy OG structure. Buds are extremely dense and absolutely caked in trichomes, making this a premium extraction candidate. Heavy defoliation improves light penetration to the lower canopy. The density of the flowers demands low humidity (below 45% RH) in late flower. It can be sensitive to overfeeding — use a lighter hand with nutrients than you might with more vigorous hybrids. Carbon filtration is non-negotiable for indoor grows; the smell is overwhelming.

Purple Kush

Pure Indica



Lineage	Hindu Kush x Purple Afghani — Oakland, California origin
Indica / Sativa	100% Indica
THC	17–22%
CBD	<1%
Flowering Time	7–8 weeks
Yield (Indoor)	400–500 g/m ²
Yield (Outdoor)	Moderate
Terpene Profile	Myrcene, Pinene, β -Caryophyllene
Aroma / Flavor	Sweet grape, earthy, woody with subtle berry
Difficulty	Easy — Beginner-friendly
Grow Method	SOG ideal; short stature suits small tents; responds to cooler nights for color
Effects	Deep sedation, full-body stone, euphoria; excellent for insomnia and pain

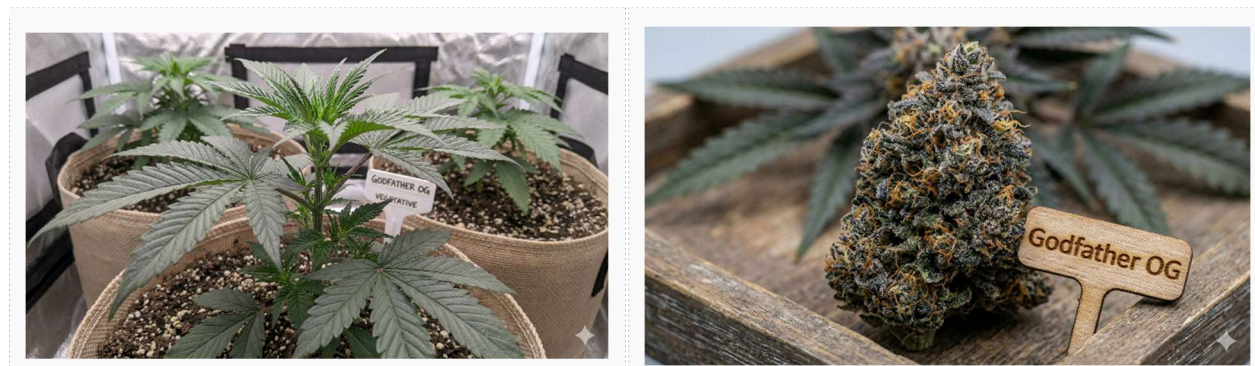
Grower's Notes

Purple Kush is a classic pure indica from Oakland, California, bred by crossing Hindu Kush with Purple Afghani. It has been a West Coast staple since the early 2000s. THC is moderate by today's standards (17–22%) but delivers a deeply sedating, full-body stone that remains popular for evening and nighttime use.

This is one of the most beginner-friendly strains on the list. Plants stay short and compact (typically under 3 feet indoors), making them ideal for small tents or SOG setups. The fast 7–8 week flowering time is a major advantage. Signature purple coloration develops when plants are exposed to cooler nighttime temperatures (low to mid 60s°F) during late flower, though some phenotypes show color regardless. Reliable, forgiving, and consistent.

Godfather OG

Indica-dominant Hybrid



Lineage	XXX OG x Alpha OG — deep OG Kush lineage
Indica / Sativa	60% Indica / 40% Sativa
THC	25–34%
CBD	<1%
Flowering Time	8–9 weeks
Yield (Indoor)	400–500 g/m ²
Yield (Outdoor)	Indoor/greenhouse recommended
Terpene Profile	Myrcene, Limonene, β-Caryophyllene
Aroma / Flavor	Pine, grape, earthy kush, subtle spice
Difficulty	Advanced
Grow Method	Precise environment control; sensitive to pH and nutrient swings
Effects	Extremely potent; heavy sedation, euphoria, strong appetite stimulation

Grower's Notes

Godfather OG, nicknamed “The Don of All OGs,” is one of the strongest strains commercially available, with lab tests reaching 34% THC. Built on XXX OG x Alpha OG, the lineage is deep in OG Kush genetics. The myrcene-dominant terpene profile produces classic pine, earthy, and grape aromas with a kushy bite.

This is not a beginner strain. The plants grow to medium height with a classic OG structure that tends to be leggy with stretch early in flower. Indoor yields are moderate (400–500 g/m²) — the emphasis is quality over quantity. Godfather OG is finicky about environment: sensitive to pH swings, prone to nutrient burn, and demanding of stable conditions. It rewards experienced growers who can dial in their setup. For Ontario's climate, this is strictly an indoor or climate-controlled greenhouse cultivar.

Big Jack

Indica-dominant Hybrid (Fast Flowering)



Lineage	Big Bud x Jack Herer — Quebec Cannabis Seeds
Indica / Sativa	Mostly Indica
THC	19–29% (phenotype dependent)
CBD	<1%
Flowering Time	~8 weeks (55–65 days)
Yield (Indoor)	Up to 800 g/m ²
Yield (Outdoor)	Up to 700 g/plant
Terpene Profile	Limonene, Myrcene, Pinene
Aroma / Flavor	Sweet lemon, lemonade-like sweetness, earthy undertone
Difficulty	Easy to Moderate
Grow Method	Versatile — indoor, outdoor, greenhouse; high resin suits extraction
Effects	Immediate heavy hit and body stone; potent full-body effects lasting several hours

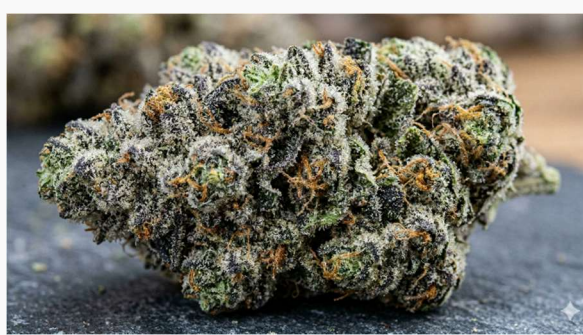
Grower's Notes

Big Jack from Quebec Cannabis Seeds is an indica-dominant hybrid crossing Big Bud's legendary yield genetics with Jack Herer's resin production and potency. QCS bred this strain specifically for high THC, heavy yields, and a fast flowering cycle. The buds are coated in countless resin crystals with a sweet lemon flavor reminiscent of fresh lemonade. THC ranges from 19–29% depending on phenotype and growing conditions, making this one of the more potent offerings from QCS.

The fast flowering period of approximately 55–65 days is a major advantage, especially for Ontario outdoor growers who need to harvest before fall weather sets in. Indoor yields can reach an impressive 800 g/m², making this a serious production strain. The indica dominance keeps plant height manageable (0–4 feet indoors, 5–8 feet outdoors), and the strain is resilient enough for beginner growers while delivering results that satisfy experienced cultivators. The heavy body stone and couch-lock effect make this best suited for evening use and pain management.

MAC 1

Balanced Hybrid



Lineage	Alien Cookies x Colombian landrace hybrid ("Miracle 15") — Capulator (backcross selection)
Indica / Sativa	50% Indica / 50% Sativa
THC	23–28%
CBD	<1%
Flowering Time	9–10 weeks
Yield (Indoor)	400–500 g/m ²
Yield (Outdoor)	Moderate
Terpene Profile	Limonene, β -Caryophyllene, Myrcene
Aroma / Flavor	Sour citrus, floral, diesel with a creamy exhale
Difficulty	Intermediate
Grow Method	SCROG; moderate defoliation; patience required for longer flower time
Effects	Balanced cerebral stimulation and physical ease; creative, social, uplifting

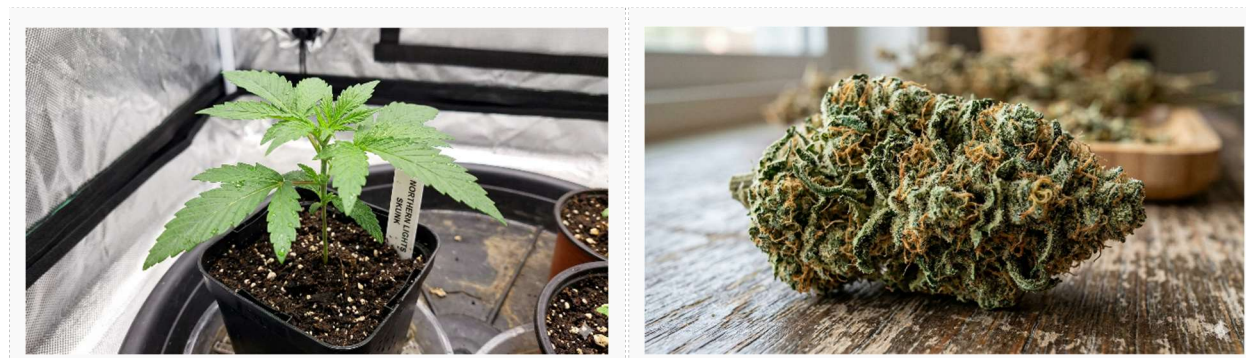
Grower's Notes

MAC 1 (Miracle Alien Cookies) is an elite backcross phenotype selected by Capulator from his MAC line. The original MAC crosses Alien Cookies (GSC x Fire OG x alien genetics) with a Colombian landrace hybrid called "Miracle 15." MAC 1 was specifically selected for exceptional resin production, potency, and balanced effects. It is traditionally a clone-only cultivar, though seed versions exist with more phenotypic variation.

MAC 1 flowers in 9–10 weeks, which is on the longer side — patience is required, but rushing harvest costs potency and terpene expression. The plants grow to medium height with a relatively open structure and trichome coverage that extends to sugar leaves and even stems. Indoor yields are moderate (400–500 g/m²); this is a quality-over-quantity strain. The buds are dense, light green to purple, with a frost coating that makes them look almost white. Responds well to SCROG and moderate defoliation.

Northern Lights Skunk

Indica-dominant Hybrid



Lineage	Northern Lights (Afghani x Thai) x Skunk #1 (Colombian x Mexican x Afghani)
Indica / Sativa	80% Indica / 20% Sativa
THC	16–22%
CBD	<1%
Flowering Time	8–10 weeks
Yield (Indoor)	550–650 g/m ²
Yield (Outdoor)	~600 g/plant
Terpene Profile	Myrcene, Pinene, β -Caryophyllene
Aroma / Flavor	Earthy, piney, spicy with sweet skunky undertones
Difficulty	Easy — Beginner-friendly
Grow Method	Any method; forgiving and adaptable; excellent for first-time growers
Effects	Deeply relaxing body high with calm euphoria; stress and pain relief

Grower's Notes

Northern Lights x Skunk is one of the foundational hybrid crosses in cannabis history, combining two of the most iconic and proven strains ever developed. Northern Lights is a pure indica from Afghani (and possibly Thai) landraces, originally bred near Seattle and stabilized by Sensi Seeds in Holland. Skunk #1 adds Colombian, Mexican, and Afghani genetics with decades of breeding stability behind it.

This strain is a proven workhorse with 30+ years of successful cultivation worldwide. Indoor yields of 550–650 g/m² are achievable with minimal fuss, and the moderate height (~1.5m) makes it easy to manage in any indoor space. Northern Lights Skunk inherits legendary mold resistance and structural density from its Northern Lights parent, combined with Skunk's vigor and yield boost. For Ontario outdoor grows, it should finish comfortably before frost and handles temperature swings better than most modern exotics. The definitive beginner strain.